



Catálogo:

Teleflex[®]
MEDICAL

www.quirurgicoinstrumental.com

1ra Cerrada de Carracci No. 18
Col. San Juan, C.P. 03730, D.F. México

THE SAPHLITE®/RADLITE® SYSTEM
MINIMALLY INVASIVE CONDUIT
HARVESTING WITHOUT AN ENDOSCOPE



As a solutions provider, Teleflex Medical offers a wide range of high-quality instrumentation and ligation products to facilitate conduit harvesting procedures.

MINIMALLY INVASIVE CONDUIT HARVESTING SOLUTIONS

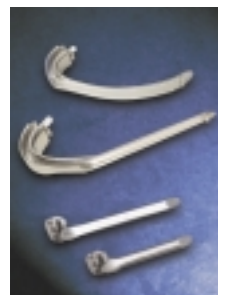


The Teleflex Medical SaphLITE/RadLITE system.

The SaphLITE and RadLITE system provides reliable tissue retraction and rapid vein harvesting.

The SaphLITE and RadLITE system is easy to learn, and can result in excellent vein quality, reduced wound complication, and noticeable cosmetic advantages.

SaphLITE/RadLITE blades are available in a wide range of lengths, widths, and curvatures.





XENON 300 WATT ILLUMINATOR

The Xenon Illuminator combines true 300 watt lighting with a sleek, modern design that remains cool and runs quiet. Pilling's Xenon features a patented five-port rotary color-coded turret that allows for simultaneous use of two Pilling cables. The lamp-hour meter and snap-in lamp cartridge offers easy maintenance.



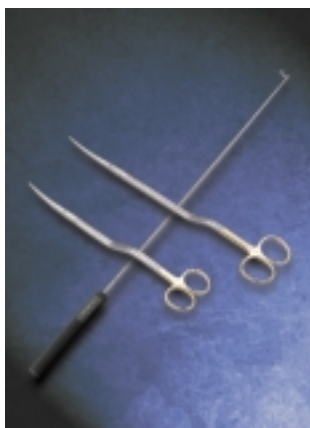
SAPH-LOOP™ VESSEL LIGATING SYSTEM

The Saphloop vessel ligating system allows distal or proximal ligation of venous or arterial vessels. The offset tip allows for better viewing and placement of the suture around the vessel, and the tip design allows full 360 degree rotation.



HEM-O-LOK® CLIP APPLIER

The right-angled Hem-o-lok Conduit Applier is designed to reach structures up to 17cm deep through a 3cm incision. When loaded with the Large Hem-o-lok clip, it can ligate vessels — such as the saphenous stump — from 5mm up to 13mm and hold as secure as 2.0 suture.



VEIN HOOK & METZENBAUM SCISSORS

Teleflex Medical's high-quality vein hooks and offset Metzenbaum scissors are ideal instruments for access and retraction.



DISCOVER THE ADVANTAGES OF THE SAPHLITE AND RADLITE SYSTEM

CONSISTENT, EXCELLENT VEIN QUALITY

- The quality of harvested vessels using the SaphLITE and RadLITE system equals that of traditional open harvest procedure¹
- SaphLITE incisions average 9cm total and typically yield veins about 46cm¹

REDUCED WOUND COMPLICATIONS, INCREASED COST-EFFECTIVENESS

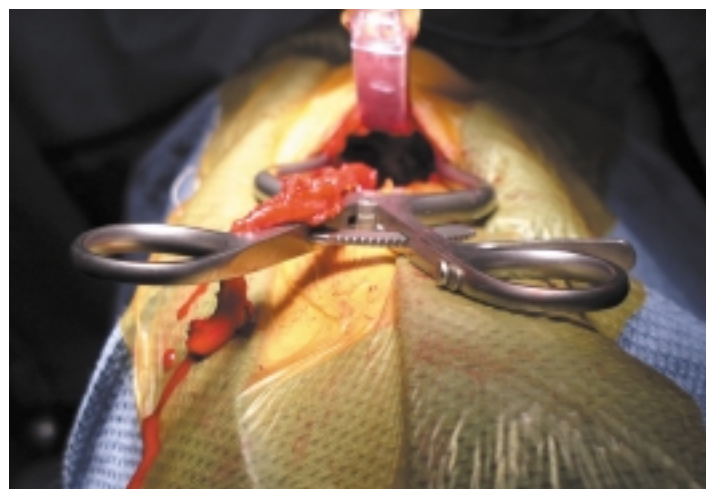
- The SaphLITE System uses fewer disposable components versus endoscopic systems and does not require CO₂ insufflation
- Minimally invasive vein harvest with SaphLITE reduces patient morbidity¹ and post-operative complications²

RAPID HARVEST TIME, EASY TO USE

- Minimally invasive saphenous vein harvest with SaphLITE can be performed as fast as traditional open harvest³
- Fully rotational arm with one-touch fixation allows ease of maneuverability and hands-free operation
- Multiple blade and light panel options allow access and direct visualization for varying anatomies



SaphLITE harvest results in excellent vessel quality



Direct visualization with minimal incision

Results of the SaphLITE/
RadLITE System

- Excellent Vein Quality
- Reduced Wound Complications
- Faster Harvest Time
- Positive Cosmetic Impact

PATIENT ADVANTAGES

- The SaphLITE and RadLITE system requires less incision length versus traditional open harvest³
- Decreased incision length can result in less patient pain, with minimal to no perceived pain at discharge and follow-up



Traditional open "filet" incision

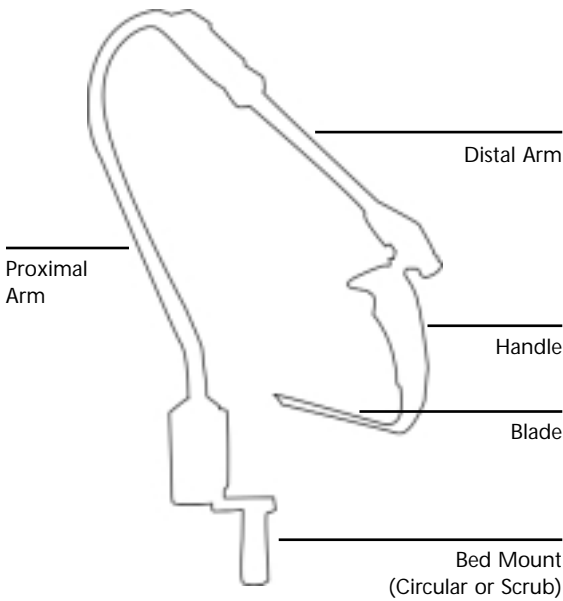


SaphLITE minimally invasive incision

1. Greenfield, et al. Minimally Invasive Vein Harvest and Wound Healing Using the SaphLITE Retractor System. *Annals of Thoracic Surgery*, Sept. 2001. Vol 72, No 3: 1046-1049.
2. Wang, et al. Saphenous Vein Harvest with SaphLITE System Versus Conventional Technique: A Prospective, Randomized Study. *Annals of Thoracic Surgery*, June 2005. Vol 79, No 6: 2018-2023.
3. Black, et al. Minimally Invasive Vein Harvesting Significantly Reduces Pain and Wound Morbidity. *European Journal of Cardiothoracic Surgery*. 2002. Vol 22: 381-386.



PILLING | WECK



ORDERING INFORMATION

SaphLITE HANDLE	89-2719
SaphLITE BLADES	
Blade, Large	89-2712
Blade, MID	89-2713
Blade, MINI	89-2714
Blade, SKINI-MINI	89-2715
Blade, Skini-MID	89-2733
Blade, Cobra	89-2734K
Blade, Tapered, MID	89-2738K
Curved MID	89-2750K
Curved Skini-MID	89-2751K
Curved Skini-Mini	89-2752K
RadLITE BLADES	
LITE-Angle Blade, Large (Outside U.S.)	E89-2754
LITE-Angle Blade	89-2753K
LIGHT PANELS	
Light Panel, Large	89-2716K
Light Panel, MID	89-2717K
Light Panel, MINI	89-2718K
RadLITE LITE-Angle, Light Panel, Large, (Outside U.S.)	E89-2760
RadLITE LITE-Angle Panel	89-2761K
GENZARM	
Genzarm Version 3 with Circular Mount	89-9462KC
Genzarm Version 3 with Scrub Mount	89-9462KS
Ball Joint for Genzarm System	89-9463K
ACCESSORIES	
Vein Hook	89-2401
Offset Metzenbaum Scissors, 9"	32-0798K
Offset Metzenbaum Scissors, 11"	32-0799K
Saph-Loop	89-2744K
Sterilization Tray	89-9470K
Pressure Hose	89-9499K
Distal Spring	89-9490K
Xenon 300W Illuminator	528300
Xenon Lamp with Module	52830
Xenon Lamp Replacement	528303
Xenon Floor Stand	528304
Hem-O-Lok Large Conduit Clip Applier	544182
Pressure Regulator	89-9491
Ball Tightener	89-9489
Beckman-Weitlaner Retractors	
Weitlaner Retractors	

Contact customer service for codes
Contact customer service for codes

CONTACT INFORMATION:

United States
Phone: (800) 367-7874 Fax: (877) 354-8088

Latin America
Phone: (800) 361-3961 Fax: (919) 361-4111

Canada
Phone: (905) 943-9000 Fax: (905) 943-9001

Europe
Phone: 33 562 18 79 40 Fax: 33 561 83 35 84

Asia
Phone: 65-6394-1019 Fax: 65-6299-6132

international@teleflexmedical.com

Some products may not be available in all markets. Please contact your Teleflex Medical distributor or representative for further details.

For mailing addresses, please visit our web page at www.teleflexmedical.com/contact.html

Pilling®, Weck® and Hem-o-lok® are registered trademarks of Teleflex Incorporated.
SaphLite® and RadLite® are registered trademarks and Saph-Loop™ is a trademark of Teleflex-CT Devices Incorporated.

© 2005 Teleflex Medical All rights reserved. Printed in USA. Lit. No. 25-4051-EN 2005-08

